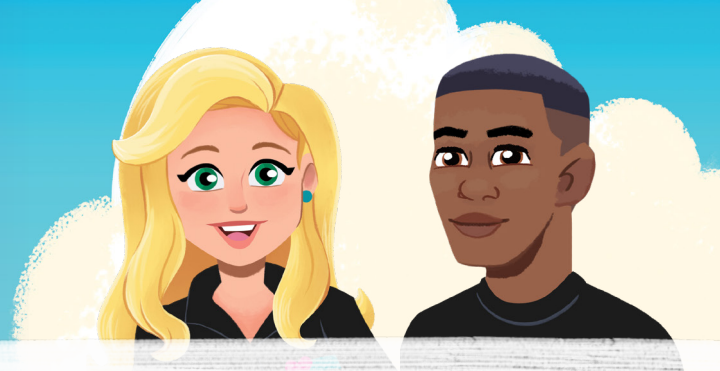




Safer, Smarter
FAMILIES

GRADES 3-5

PRESENTED BY:  LAUREN'S KIDS



CREATE A FAMILY PASSWORD



A Family Password is designed to increase your child's safety and empowers them with the ability to make safe choices with confidence. A Family Password can be one word or a short phrase that has meaning to your family and is known within the immediate family. Use of the Family Password communicates to your child that they are safe and that you have knowledge of the word being used.

CREATE A PICKUP PASSWORD

It's important to have a system for pickup after school or after extracurricular activities. Your child's safety depends on it. Most parents tell their child if someone else will be picking them up. Sometimes the parent might forget, or there may be an emergency that prevents the parent from being able to be there. Creating a Pickup Password enables your child to determine that it is safe to get in the car with someone other than you because that word has been shared by you with the person who is authorized to pick up your child.

You can have confidence that your child will know not get into a car, on a bus, etc. with anyone unless that person has the Pickup Password.

Empower your child with the tools to tell if someone is trying to get access to them without your approval. It is important that your child understand that if someone does not have the password, they are not to go with them without your approval, or share information with them, and that they need to tell an adult immediately.